

Figure 40. Fuel Injection Pump (Sheet 1 of 4)

AIR FORCE T.O. 35C2-3-442-14
 ARMY TM5-6115-600-24P
 NAVY NAVFAC P-8-628-24P
 MARINE CORPS SL-4-07464B

SECTION II. REPAIR PARTS FOR ORGANIZATIONAL, INTERMEDIATE (FIELD)
 (DIRECT AND GENERAL SUPPORT) AND DEPOT MAINTENANCE

(1) ILLUSTRATION		(2) SMR CODE				(3) USMC		(4)	(5) DESCRIPTION		(6)	(7)	(8)
a	b	a	b	c	d	a	b	NATIONAL STOCK NUMBER	REF NUMBER & MFR CODE	USABLE ON CODE	U/M	QTY INC IN UNIT	USMC QTY PER EQUIP
FIG NO.	ITEM NO.	ARMY	AIR FORCE	NAVY	USMC	SSI	REPL FACTOR						
40		PBFH	PAFF	PAHZ	PAHH		.013	2910-01-125-4519	GROUP 05 FUEL SYSTEM FUEL INJECTION PUMP 5R3882	11083	EA	1	1
40	1	PAZZ	PAFZ	PAZZ	PAHZ	D	.008	5306-00-261-4453	BOLT, HEX 51615	11083	EA	13	28
40	2	PAZZ	PAFZ	PAZZ	PAHZ	D	.008	5306-00-721-5679	BOLT, HEX 9P6580	11083	EA	4	4
40	3	PAZZ	PAFZ	PAZZ	PAHZ		.030	5330-01-068-7345	GASKET, P/O KIT P/N 6N1133 6N2843	11085	EA	1	1
40	4	PAZZ	PAFZ	PAZZ	PAHZ	D	.006	4731-00-069-1411	ELBOW 4N7572	11083	EA	1	1
40	4A	PAFZ	PAFZ	PAHZ	PAHZ		.030	4820-01-053-4586	ELBOW, CHECK VALVE HN1828	11083	EA	1	1
40	5	PAZZ	PAFZ	PAZZ	PAHZ		.030	5330-01-068-7344	GASKET, P O KIT P/N 6N1133 4N9337	11083	EA	1	1
40	6	PAZZ	PAFZ	PAZZ	PAHZ	D	.008	2910-01-068-9785	DISC 4N9336	11083	EA	1	1
40	7	XB	XB	XB	XB				HOUSING 1P1420	11085	EA	1	1
40	8	PAZZ	PAFZ	PAZZ	PAHZ	D	.005	4820-01-103-3732	VALVE ASSY 7N450	11083	EA	1	1
40	9	PAZZ	PAFZ	PAZZ	PAHZ	D	.008	4730-01-106-4024	PLUG 4N5050	11083	EA	1	1
40	10	PAZZ	PAFZ	PAZZ	PAHZ			2910-01-068-6095	CHANNEL 6N2810	11085	EA	1	1
40	11	PAZZ	PAFZ	PAZZ	PAHZ		.030	5330-01-069-0995	GASKIT, P O KIT P/N 6N1133 4N4431	11083	EA	1	1
40	12	PAZZ	PAFZ	PAZZ	PAHZ	D	.008	2520-01-067-2179	PLUG 954180	11083	EA	1	1
40	13	PAZZ	PAFZ	PAZZ	PAHZ		.030	5365-00-194-4472	PACKING, P O KIT P/N 6N1133 47533	11083	EA	1	1
40	14	PAZZ	PAFZ	PAZZ	PAHZ		.030	5330-01-127-8567	GASKET, P O KIT P/N 6N1133 4N9057	11083	EA	1	1
40	15	PAZZ	PAFZ	PAZZ	PAHZ			2910-01-128-9190	COVER 4N4351	11083	EA	1	1
40	16	AFP	AFP	AHZZ	AHZZ				PUMP, FUEL INJECTION 6N205	11083	EA	1	1
40	17	PAZZ	PAFZ	PAZZ	PAHZ	D	.008	5305-00-004-7245	BOLT, HEX 2M5471	11083	EA	2	2
40	18	PAFZ	PAFZ	PAFZ	PAFZ			2910-01-140-8212	COVER ASSY 4N1591	11083	EA	1	1
40	19	PAZZ	PAFZ	PAZZ	PAHZ	D	.008	5306-01-024-7524	BOLT, HEX 2P3200	11083	EA	1	1
40	20	PAZZ	PAFZ	PAZZ	PAHZ		.030	5330-00-613-6500	SEAL P O KIT P/N 6N1133 1J1671	11083	EA	1	2
40	21	PAZZ	PAFZ	PAZZ	PAHZ	D	.008	5305-01-025-4399	SCREW ASSY 6N412	11083	EA	1	1
40	22	PAZZ	PAFZ	PAZZ	PAHZ	D	.008	5310-00-138-0258	NUT 4B2042	11083	EA	1	1
40	23	PAZZ	PAFZ	PAZZ	PAHZ	D	.010	5310-00-045-3299	WASHER, LOCK MS382338-42	11083	EA	1	1
40	24	PAZZ	PAFZ	PAZZ	PAHZ	D	.010	5310-00-450-0414	WASHER, FLAT 8F1326	11083	EA	1	1

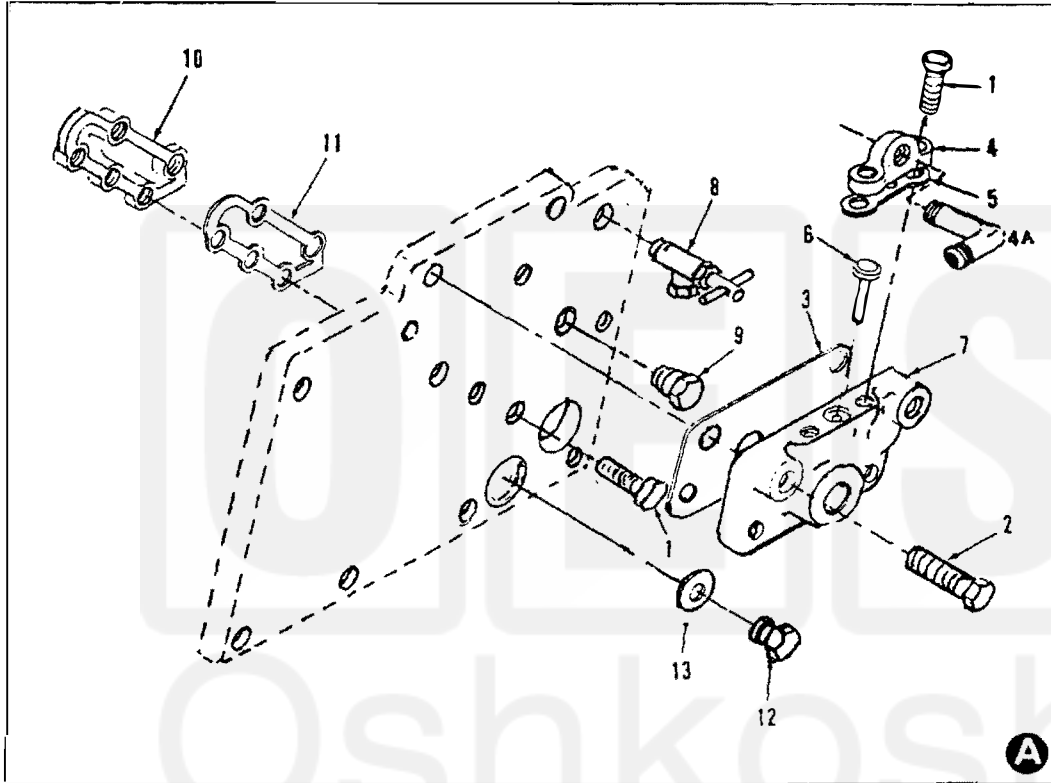


Figure 40. Fuel Injection Pump (Sheet 2 of 4)

AIR FORCE T.O. 35C2-3-442-14
 ARMY TM5-6115-600-24P
 NAVY NAVFAC P-8-628-24P
 MARINE CORPS SL-4-07464B

SECTION II. REPAIR PARTS FOR ORGANIZATIONAL, INTERMEDIATE (FIELD)
 (DIRECT AND GENERAL SUPPORT) AND DEPOT MAINTENANCE

(1) ILLUS- TRATION		(2) SMR CODE				(3) USMC		(4)	(5) DESCRIPTION	(6)	(7) QTY INC IN UNIT	(8) USMC QTY PER EQUIP
a	b	a	b	c	d	a	b	NATIONAL STOCK NUMBER	REF NUMBER & MFR CODE	USABLE ON CODE	U/M	
FIG NO.	ITEM NO.	ARMY	AIR FORCE	NAVY	USMC	SSI	REPL FACTOR					
									GROUP05 - FUELS SYSTEM -CONTINUED			
									FUEL INJECTION PUMP -CONTINUED			
40									WASHER, FLAT 1P7326	11083	EA	1 1
40	25	PAHZZ	PAFZZ	PAHZZ	PAHZZ	D	.010	5310-01-023-9105				
40	26	XBHZZ	PAFZZ	PAHZZ	PAHZZ	D	.003	2910-01-104-9318	COVER 6N411	11083	EA	1 1
40	27	PAHZZ	PAFZZ	PAHZZ	PAHZZ		.030	5330-01-024-3368	GASKET, P/O KIT P/N 6N1133 4N508	11083	EA	1 1
40	28	PAHZZ	PAFZZ	PAHZZ	PAHZZ		.030	5330-00-292-0577	PACKING, P/O KIT P/N 6N1133 MS28775-007	96906	EA	1 1
40	29	PAHZZ	PAFZZ	PAHZZ	PAHZZ	D	.005	2530-01-068-9709	SHAFT 4N528	11083	EA	1 1
40	30	PAHZZ	PAFZZ	PAHZZ	PAHZZ	D	.015	5360-01-023-9435	SPRING 4N605	11083	EA	1 1
40	31	PAAZZ	PAFZZ	PAHZZ	PAHZZ	D	.005	2910-01-024-1512	VALVE 4N1767	11083	EA	1 1
40	32	PAHZZ	PAFZZ	PAHZZ	PAHZZ	D	.008	5305-01-024-4794	SCREW, PAN HEAD 2N2638	11083	EA	1 7
40	33	PAHZZ	PAFZZ	PAHZZ	PAHZZ	D	.003	4310-01-068-9779	LEVER 4N1763	11083	EA	1 6
40	34	PAHZZ	PAFZZ	PAHZZ	PAHZZ	D	.005	2910-01-125-4534	SHAFT ASSY 4N0572	11083	EA	1 1
40	35	PAHZZ	PAFZZ	PAHZZ	PAHZZ	D	.008	3120-01-022-3955	BUSHING 4N218	11083	EA	6 6
40	36	AFP	AFP	AHH	AHH			2910-01-024-0963	PUMP ASSY 4N8898	11083	EA	6 6
40	37	PAHZZ	PAFZZ	PAHZZ	PAHZZ	D	.013	5365-01-024-5118	RING 4N224	11083	EA	1 6
40	38	PAHZZ	PAFZZ	PAHZZ	PAHZZ		.013	2910-01-024-0939	PUMP, FUEL INJECTION 6N7527	11083	EA	1 6
40	39	XA	XA	XA	XA				BARREL 4N2034	11083	EA	1 6
40	40	XA	XA	XA	XA				SLEEVE 4N1764	11083	EA	1 6
40	41	XA	XA	XA	XA				PLUNGER 4N1762	11083	EA	1 6
40	42	PAHZZ	PAFZZ	PAHZZ	PAHZZ	D	.008	2910-01-024-1513	BONNET 4N209	11083	EA	1 6
40	43	PAHZZ	PAFZZ	PAHZZ	PAHZZ	D	.005	2910-00-923-2466	VALVE 9B1320	11083	EA	1 6
40	44	PAHZZ	PAFZZ	PAHZZ	PAHZZ	D	.015	5360-01-024-2608	SPRING 9L9424	11083	EA	1 6
40	45	PAHZZ	PAFZZ	PAHZZ	PAHZZ	D	.013	5310-01-062-0380	WASHER 4N2728	11083	EA	1 6
40	46	PAHZZ	PAFZZ	PAHZZ	PAHZZ	D	.015	5360-01-105-9399	SPRING 9N3862	11083	EA	1 6
40	47	PAHZZ	PAFZZ	PAHZZ	PAHZZ		.030	5330-00-310-6575	SEAL, P/O KIT P/N1133 6P6672	11083	EA	6 6
40	48	PAHZZ	PAFZZ	PAHZZ	PAHZZ	D	.008	2910-01-125-4520	LIFTER 8N1317	11083	EA	6 6
40	49	PAHZZ	PAFZZ	PAHZZ	PAHZZ	D	.009	2910-01-024-2868	ROLLER 4N2685	11083	EA	6 6